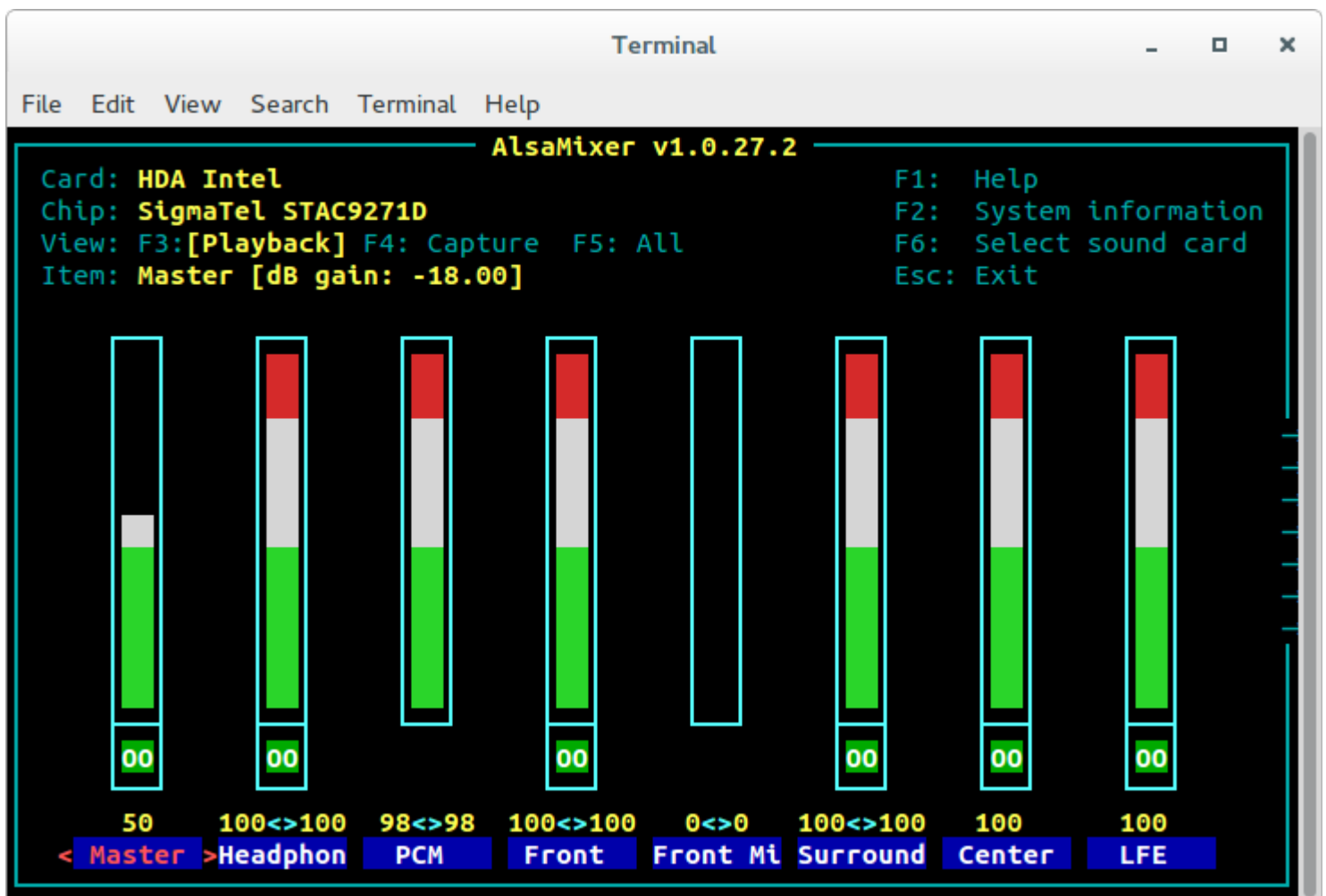


How to fix NO audio playback in Linux

Is your DAC present under sound devices (in the settings menu) yet, you still have no audio? Most likely the level control was muted during a recent software update. PulseAudio controls the underlying ALSA level controls. To change the ALSA level controls:

- Open a terminal.
- Type “**alsamixer**” and press the enter key.
- You will now see a user interface like this...



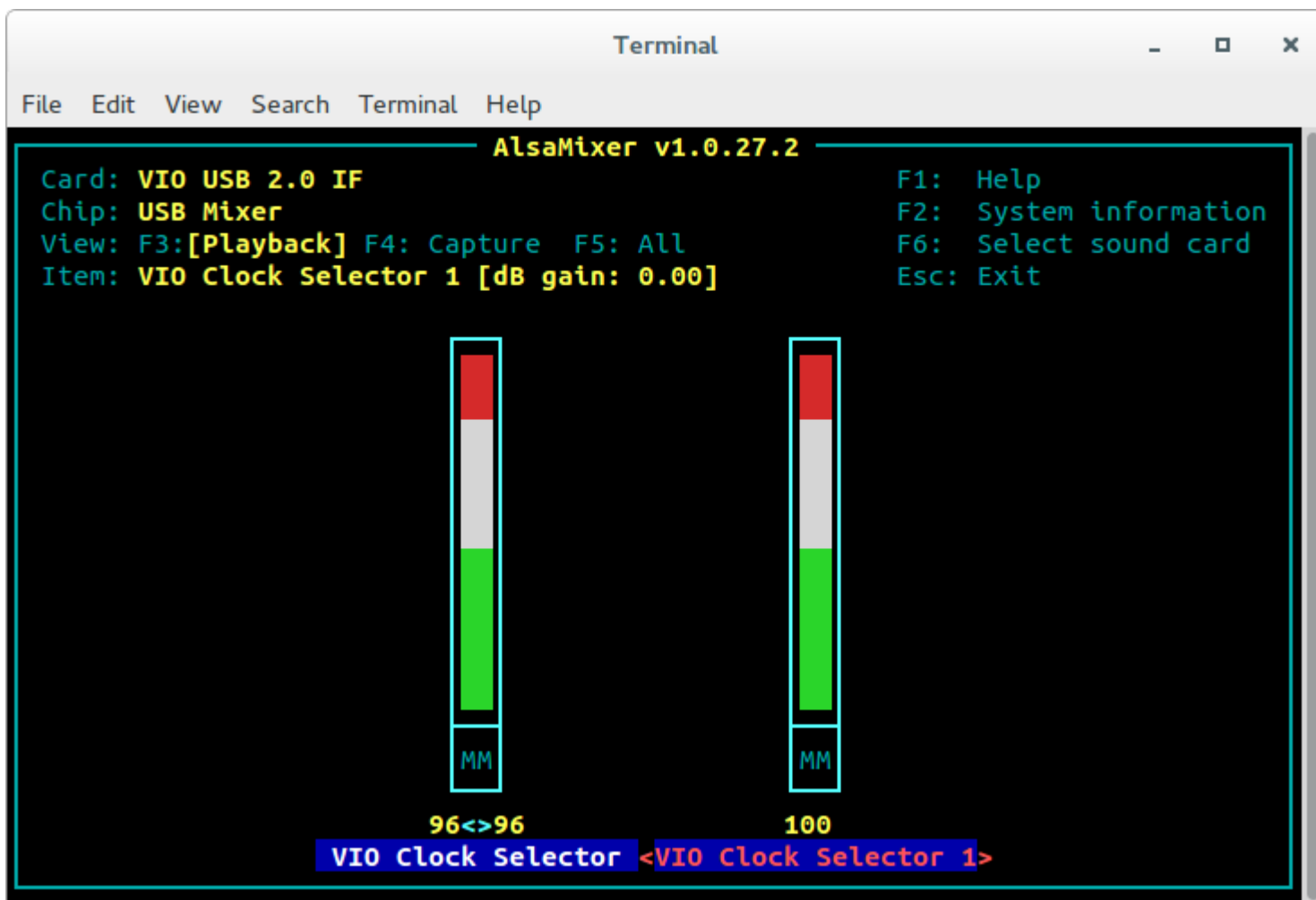
Press F6 on your keyboard. Use the up and down arrow keys to select your DAC.

The image shows a terminal window titled "Terminal" with a menu bar containing "File", "Edit", "View", "Search", "Terminal", and "Help". The main content is the ALSA Mixer v1.0.27.2 interface. At the top, it displays system information: "Card: HDA Intel", "Chip: SigmaTel STAC9271D", "View: F3:[Playback] F4: Capture F5: All", and "Item: Master [dB gain: -18.00]". To the right, a list of function keys is shown: "F1: Help", "F2: System information", "F6: Select sound card", and "Esc: Exit".

The central part of the interface features eight vertical volume sliders, each with a green bar indicating the current level and a red bar at the top. Below each slider is a numerical value: 50, 100<>100, 98<>98, 100<>100, 0<>0, 100<>100, 100, and 100. Below these values are labels for the audio channels: "< Master >", "Headphon", "PCM", "Front", "Front Mi", "Surround", "Center", and "LFE".

A blue dialog box titled "Sound Card" is overlaid on the interface, listing available sound cards: "- (default)", "0 HDA Intel", "1 VIO USB 2.0 IF", and "2 HDA NVidia". The option "1 VIO USB 2.0 IF" is currently selected and highlighted. Below the list, it says "enter device name...".

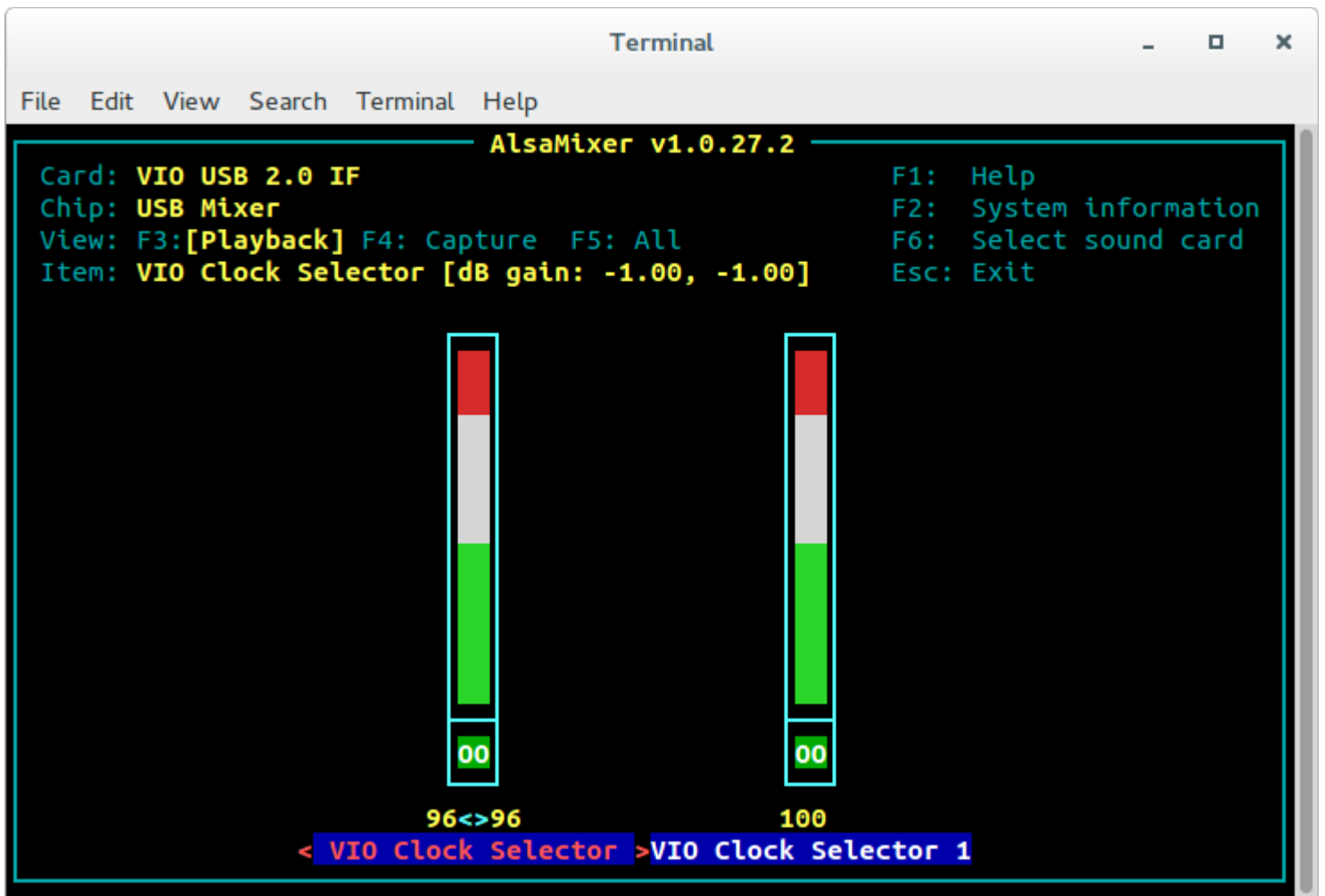
After you selected (highlighted) your DAC press enter. You will now see the level controls like this...



If **MM** is present at the bottom of each level control then your DAC is muted.

Use the left and right arrow keys to select each level control and press the M key on your keyboard to un-mute each.

You should then see "00" under each level control which means un-muted (maximum level). It should now look like this...



Close the terminal and your settings will automatically be saved.

Now go listen to some music!

Arthur www.Vioelectric-USA.com